

TECHNICAL ANNOUNCEMENT

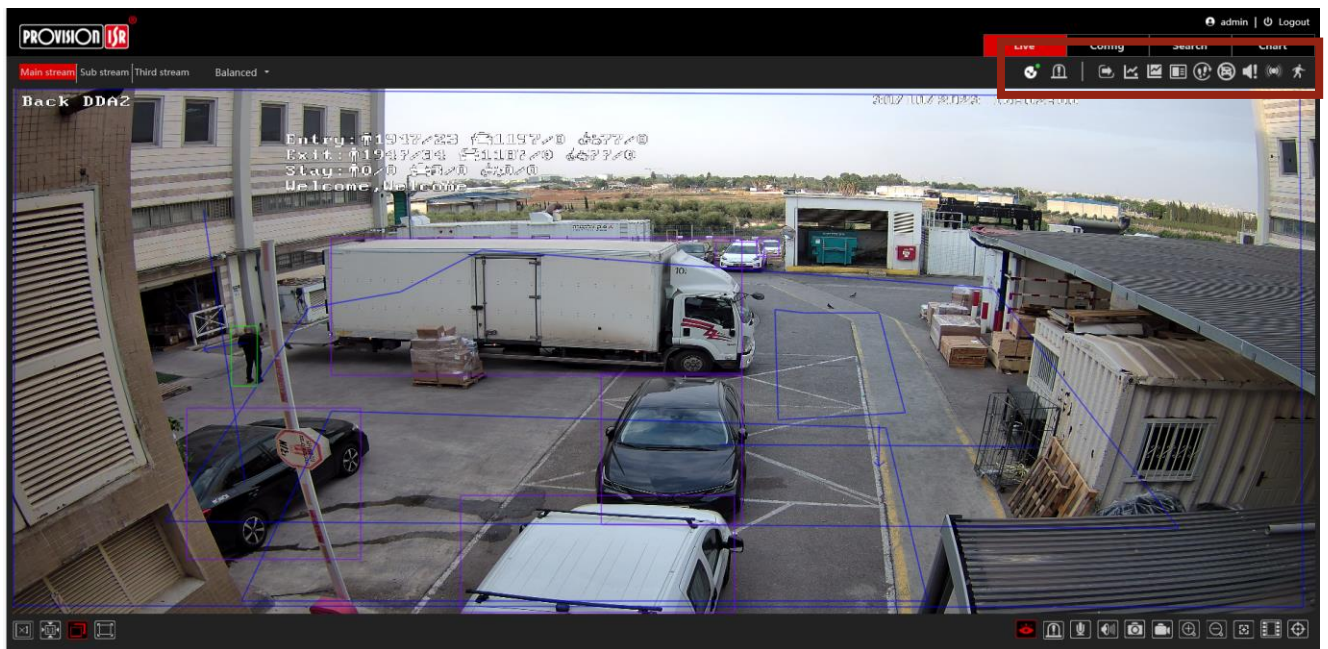
November 2023

SUBJECT: Firmware release
Models: DAI-380IPEN-MVF-V3 ; DI-380IPEN-MVF-V3 ;
DMA-380IPEN-28-V3 ; I6-380IPEN-MVF-V3
FW: v5.1.3.1(51225) RD20231013

LIST OF IMPROVEMENTS:

1) IMPROVED: MULTIPLE AI RULES + METADATA(DDA2)

Experience the power of DDA-based analytics – COMBINED! Discover the ability to seamlessly deploy line crossing, sterile area monitoring, object counting, and a variety of other features concurrently, enhancing your surveillance capabilities like never before!



2) NEW: Illegal parking

Discover our brand-new 'Illegal Parking' feature. Stay informed and in control – receive notifications when a vehicle is parked where it shouldn't be, you can set up to 4 different forbidden parking spaces!

System

Basic Information |
Date and Time | Local Config |
Storage

Image

Display Settings | Video/Audio |
OSD | Video Mask | ROI Config |
Zoom/Focus

Alarm

Motion Detection | General Fault
| Alarm In | Alarm Out |
Alarm Server |
Camera Tampering |
Audio Exception

Analytics

Enable Event
Item Monitoring | Line Crossing
| Area Entry | Area Exit |
Object Counting (Line) |
Object Counting (Area) |
Sterile Area | Heat Map |
Meta data | Loitering Detection
| **Illegal Parking Detection** |

Config Home > Analytics > Illegal Parking Detection

Detection Config

Area

Schedule

Back

DDMMYY
2022/10/20 16:31:06
Latitude: 19°42'28" N 97°0' 637770
Exit: 01943735 2412210 637770
Status: 010 5370 25620
Welcome, Ualeone

Draw Area

Clear

Draw Target Size

Alarm Area

1

Target Size

Object

Car/Truck

Motorcycle/Bicycle

Min Width

1

%

Height

1

%

Max Width

90

%

Height

90

%

Save

3) NEW: Loitering

Provision-ISR Technical Dept: support@provisionisr.com

The new “Loitering” addition, allows you to get a notification whenever an person is wondering around for too long In the area. you can set up to 4 areas.

System

Basic Information | Date and Time | Local Config | Storage

Image

Display Settings | Video/Audio | OSD | Video Mask | ROI Config | Zoom/Focus

Alarm

Motion Detection | General Fault | Alarm In | Alarm Out | Alarm Server | Camera Tampering | Audio Exception

Analytics

Enable Event

Item Monitoring | Line Crossing | Area Entry | Area Exit | Object Counting (Line) | Object Counting (Area) | Sterile Area | Heat Map | Meta data | Loitering Detection | Illegal Parking Detection

Config Home > Analytics > Loitering Detection

Detection Config

Area

Schedule

Back

DDA2

21/10/2023 16:34:33

Entry: 1948/28 1197/0 6377/0

Exit: 01948/35 1194/0 6377/0

Stay: 01948/35 1194/0 6377/0

Welcome,Welcome

Draw Area

Clear

Draw Target Size

Alarm Area

1

2

3

4

Target Size

Object

Human

Min Width

1

%

Height

1

%

Max Width

90

%

Height

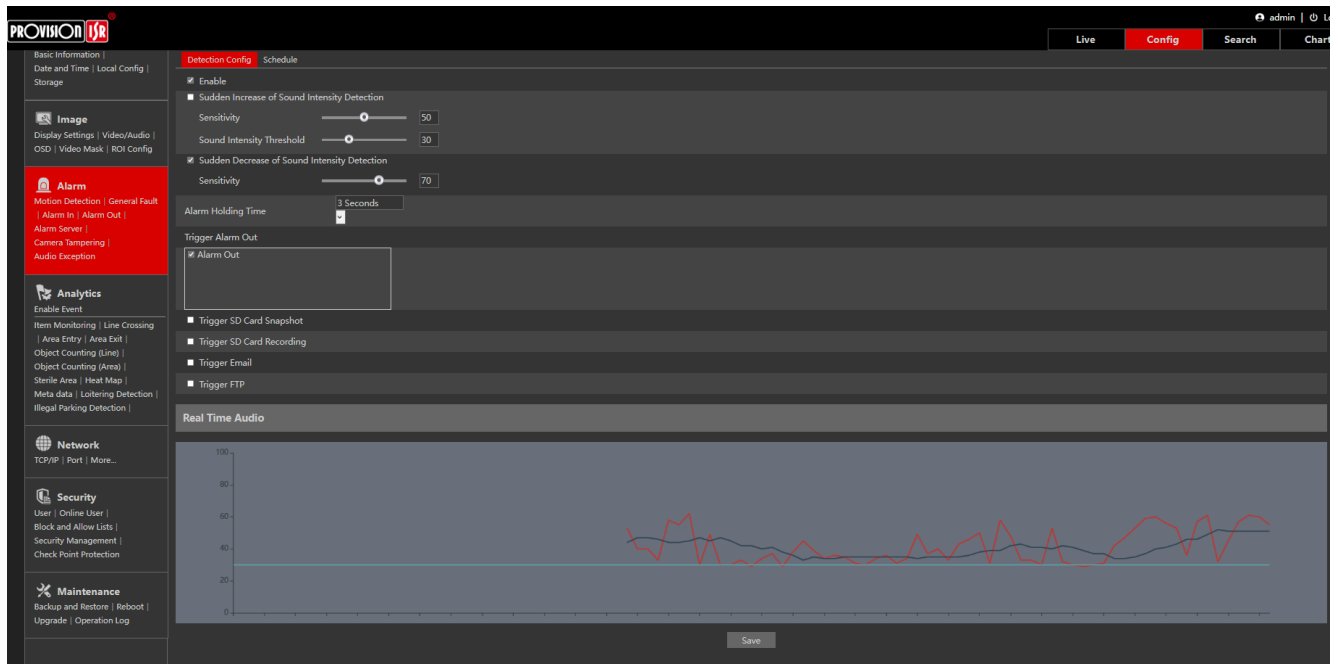
90

%

Save

4) NEW: Audio Exception / Sound Anomalies

Introducing one of our latest enhancements: Receive notifications when a voice exceeds or falls below the allowed volume level. Plus, enjoy the flexibility of setting your own threshold, ensuring notifications only trigger for prolonged anomalies.



5) NEW: FTPS + SFTP

Enhance your camera capabilities with the convenience of FTPS and SFTP support. Safely transfer your data with added security and ease.

6) Added Check Point nano agent protection

By implementing the factory tool & file, Check point nano agent protection module will be added to this FW version.

Provision-ISR Technical Team